

**ITEM 29. PARKING – LOADING ZONE AND TICKET PARKING – KIPPAX
STREET SURRY HILLS**

TRIM RECORD NO: 2018/032937

RECOMMENDATION

It is recommended that the Committee endorse the reallocation of parking in Kippax Street, Surry Hills as follows:

- (A) Northern side, between the points 14.1 metres and 31.8 metres (three car spaces) east of Elizabeth Street, as “Loading Zone Ticket 8am-6pm, Mon-Fri” and “4P Ticket 6pm-10pm, Mon-Fri; 8am-10pm, Sat, Sun & Public Holidays; Permit Holders Excepted Area 18”;
- (B) Northern side, between the points 50 metres and 63.3 metres (two car spaces), 73.3 metres and 98 metres (four car spaces), 131.4 metres and 206 metres (12 car spaces), 239.5 metres and 244.7 metres (one car space), and between 262.2 metres and 271.1 metres (two car spaces) east of Elizabeth Street, as “2P Ticket 8am-6pm, Mon-Fri; Permit Holders Excepted Area 18” and “4P Ticket 6pm-10pm, Mon-Fri; 8am-10pm, Sat, Sun & Public Holidays, Permit Holders Excepted Area 18”;
- (C) Northern side, between the points 8 metres and 34.7 metres (four car spaces) and 65.7 metres and 77.6 metres (two car spaces) east of Waterloo Street, as “Loading Zone Ticket 8am-6pm, Mon-Fri” and “4P Ticket 6pm-10pm, Mon-Fri; 8am-10pm, Sat, Sun & Public Holidays; Permit Holders Excepted Area 18”;
- (D) Southern side, between the points 56 metres and 83 metres (five car spaces) and 218.7 metres and 235.9 metres (three car spaces) east of Elizabeth Street, as “2P Ticket 8am-6pm, Mon-Fri; Permit Holders Excepted Area 18” and “4P Ticket 6pm-10pm, Mon-Fri; 8am-10pm, Sat, Sun & Public Holidays, Permit Holders Excepted Area 18”;
- (E) Southern side, between the points 244.7 metres and 257.7 metres (two car spaces) east of Elizabeth Street, as “Loading Zone Ticket 8am-6pm, Mon-Fri” and “4P Ticket 6pm-10pm, Mon-Fri; 8am-10pm, Sat, Sun & Public Holidays; Permit Holders Excepted Area 18”; and
- (F) Southern side, between the points 84.7 metres and 97 metres (two car spaces) east of Waterloo Street, as “2P Ticket 8am-6pm, Mon-Fri; Permit Holders Excepted Area 18” and “4P Ticket 6pm-10pm, Mon-Fri; 8am-10pm, Sat, Sun & Public Holidays, Permit Holders Excepted Area 18”.

VOTING MEMBERS FOR THIS ITEM

<i>Voting Members</i>	<i>Support</i>	<i>Object</i>
City of Sydney		
Roads and Maritime Services		
NSW Police – Surry Hills PAC		
Representative for the Member for Newtown		

DECISION

BACKGROUND

The City has reviewed parking restrictions in the vicinity of Foveaux Street, Surry Hills and identified locations that need to be updated in accordance with the City's Neighbourhood Parking Policy and to align with other restrictions in the immediate area.

This proposal includes updating the parking restrictions in Kippax Street, between Elizabeth and Little Riley Streets.

COMMENTS

The kerb space on both sides of Kippax Street, Surry Hills, where the parking changes are proposed, is currently signposted as a combination of Loading Zones and various timed ticket parking.

It is proposed to update the parking restrictions in Kippax Street to better service the adjacent land use. As such, it is proposed to update the existing ticket parking to "2P Ticket 8am-6pm, Mon-Fri; Permit Holders Excepted Area 18" and "4P Ticket 6pm-10pm, Mon-Fri; 8am-10pm, Sat, Sun & Public Holidays; Permit Holders Excepted Area 18".

It is also proposed to update the existing Loading Zones in Kippax Street to "Loading Zone Ticket 8am-6pm, Mon-Fri" and "4P Ticket 6pm-10pm, Mon-Fri; 8am-10pm, Sat, Sun & Public Holidays; Permit Holders Excepted Area 18".

The proposed parking changes will align with other restrictions in the immediate area, better service the needs of the adjacent land use, reduce confusion and improve compliance for all road users.

CONSULTATION

The City consulted local residents and businesses in the area. There were 565 letters sent out with no responses supporting the proposal and two responses opposing the proposal.

The submissions opposing the proposal noted that the changes would reduce the unrestricted parking available to residents outside the Loading Zone hours. However the proposed ticket parking will improve turnover of parking and therefore availability of parking for residents and visitors to the area.

FINANCIAL

Funds are available in the current budget.

Parking – Loading Zone and Ticket Parking – Kippax Street Surry Hills






Manbir Singh, Senior Traffic Engineer

Kippax Street, Surry Hills Proposed parking changes





Source : Nearmap – Saturday 11 February 2017

Existing

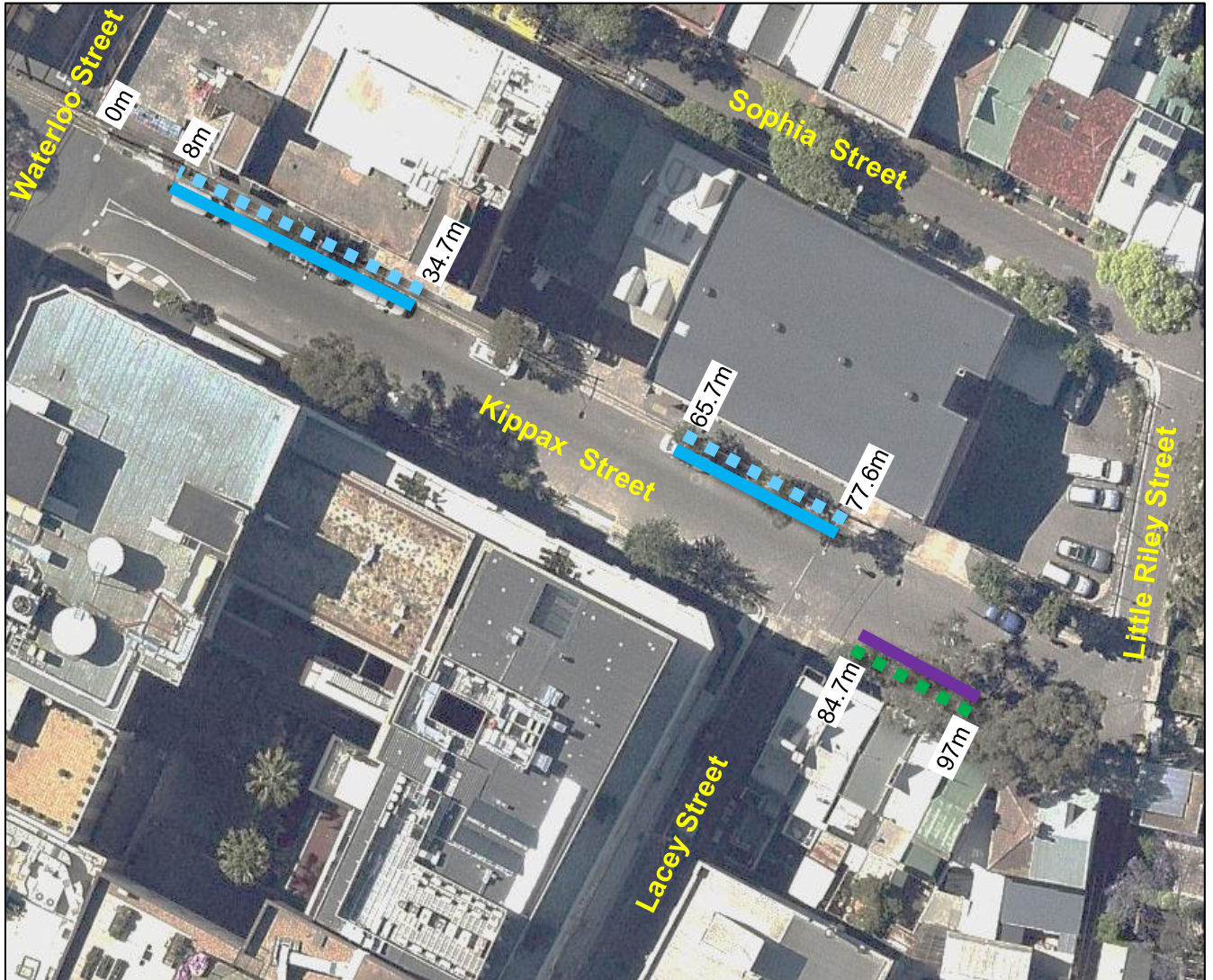
-  "1P Ticket 8am-6pm Mon-Fri; PHE Area 18" and "4P Ticket 6pm-10pm, Mon-Fri; 8am-10pm, Sat, Sun & Public Holidays; PHE Area 18"
-  "Loading Zone 8.30am-5pm, Mon-Fri"
-  "Loading Zone 8am-7pm, Mon-Sun"
-  "2P Ticket 8am-10pm; Permit Holders Excepted Area 18"
-  "1P 8.30am-6pm, Mon-Fri; 8.30am-12.30pm, Sat"

Proposed

-  "2P Ticket 8am-6pm Mon-Fri; PHE Area 18" and "4P Ticket 6pm-10pm, Mon-Fri; 8am-10pm, Sat, Sun & Public Holidays; PHE Area 18"
-  "Loading Zone Ticket 8am-6pm, Mon-Fri" and "4P Ticket 6pm-10pm, Mon-Fri; 8am-10pm, Sat, Sun & Public Holidays; PHE Area 18"





Kippax Street, Surry Hills Proposed parking changes



Source : Nearmap – Saturday 19 October 2017

Existing

-  "1P 8am-8pm, Mon-Fri; Permit Holders Excepted Area 18"
-  "Loading Zone Ticket 8.30am-5pm, Mon-Fri"

Proposed

-  "2P Ticket 8am-6pm Mon-Fri; PHE Area 18" and "4P Ticket 6pm-10pm, Mon-Fri; 8am-10pm, Sat, Sun & Public Holidays; PHE Area 18"
-  "Loading Zone Ticket 8am-6pm, Mon-Fri" and "4P Ticket 6pm-10pm, Mon-Fri; 8am-10pm, Sat, Sun & Public Holidays; PHE Area 18"